



2021

# ANNUAL WATER QUALITY REPORT

HUDSON OAKS PWS#1840006

## Why Provide A Water Quality Report?

The City of Hudson Oaks provides treated groundwater from the Trinity Aquifer in Parker County and purchases treated surface water from the City of Weatherford from Lake Benbrook in Tarrant County, Texas. The water quality data from the City of Weatherford and the City of Hudson Oaks are presented the following page(s).

In accordance with TCEQ (Texas Commission on Environmental Quality) regulations we are providing the attached information regarding water quality. This is a routine procedure, not an indication of any problems with our water supply. For your protection TCEQ requires that we monitor numerous substances that may be present in water. The attached charts list these possible contaminants, the maximum allowed levels, test results.

You may be more vulnerable than the general population to certain microbial contaminants, such as Cryptosporidium, in drinking water. Infants, some elderly or immunocompromised persons, such as those undergoing chemotherapy for cancer; those who have undergone organ transplants; those who are undergoing treatment with steroids; and people with HIV/AIDS or other immune system disorders, can be particularly at risk from infections. You should seek advice about drinking water from your physician or health care provider. Additional guidelines on appropriate means to lessen the risk of infection by Cryptosporidium are available from the Safe Drinking Water Hotline at (800) 426-4791.

**Este reporte incluye información importante sobre el agua potable. Para asistencia en Español, favor de llamar al telefono (682) 229-2400.**

## Information About Your Drinking Water

The sources of drinking water (both tap water and bottled water) include rivers, lakes, streams, ponds, reservoirs, springs, and wells. As water travels over the surface of the land or through the ground, it dissolves naturally-occurring minerals and, in some cases, radioactive material, and can pick up substances resulting from the presence of animals or from human activity. Drinking water, including bottled water, may reasonably be expected to contain at least small amounts of some contaminants. The presence of contaminants does not necessarily indicate that water poses a health risk. More information about contaminants and potential health effects can be obtained by calling the EPA's Safe Drinking Water Hotline at (800) 426-4791.

Contaminants that may be present in source water include:

- Microbial contaminants, such as viruses and bacteria, which may come from sewage treatment plants, septic systems, agricultural livestock operations, and wildlife.
- Inorganic contaminants, such as salts and metals, which can be naturally-occurring or result from urban storm water runoff, industrial or domestic wastewater

discharges, oil and gas production, mining, or farming.

- Pesticides and herbicides, which may come from a variety of sources such as agriculture, urban storm water runoff, and residential uses.
- Organic chemical contaminants, including synthetic and volatile organic chemicals, which are by-products of industrial processes and petroleum production, and can also come from gas stations, urban storm water runoff, and septic systems.
- Radioactive contaminants, which can be naturally-occurring or be the result of oil and gas production and mining activities.

In order to ensure that tap water is safe to drink, EPA prescribes regulations which limit the amount of certain contaminants in water provided by public water systems. FDA regulations establish limits for contaminants in bottled water which must provide the same protection for public health.

Contaminants may be found in drinking water that may cause taste, color, or odor problems. These types of problems are not necessarily causes for health concerns. For more information on taste, odor, or color of drinking water, please contact the system's business office.

You may be more vulnerable than the general population to certain microbial

contaminants, such as Cryptosporidium, in drinking water. Infants, some elderly, or immunocompromised persons such as those undergoing chemotherapy for cancer; persons who have undergone organ transplants; those who are undergoing treatment with steroids; and people with HIV/AIDS or other immune system disorders, can be particularly at risk from infections. You should seek advice about drinking water from your physician or health care providers. Additional guidelines on appropriate means to lessen the risk of infection by Cryptosporidium are available from the Safe Drinking Water Hotline (800-426-4791). If present, elevated levels of lead can cause serious health problems, especially for pregnant women and young children. Lead in drinking water is primarily from materials and components associated with service lines and home plumbing. We are responsible for providing high quality drinking water, but we cannot control the variety of materials used in plumbing components. When your water has been sitting for several hours, you can minimize the potential for lead exposure by flushing your tap for 30 seconds to 2 minutes before using water for drinking or cooking. If you are concerned about lead in your water, you may wish to have your water tested. Information on lead in drinking water, testing methods, and steps you can take to minimize exposure is available from the Safe Drinking Water Hotline or at <http://www.epa.gov/safewater/lead>.

CITY OF HUDSON OAKS provides treated groundwater from the Trinity Aquifer in Parker County and purchases treated surface water from the CITY OF WEATHERFORD. CITY OF WEATHERFORD provides purchase surface water from Lake Weatherford located in Parker County and Lake Benbrook in Tarrant County.

No Source Water Assessment for your drinking water source(s) has been conducted by the TCEQ for your water system. The report describes the susceptibility and the types of constituents that may come into contact with your drinking water source based on human activities and natural conditions. The information in this assessment allows us to focus our source water protection strategies.

### 2021 Water Quality Test Results

Lead & Copper	Date Sampled	MCLG	AL	90th Percentile	# Sites Over AL	Units	Violation	Likely Source of Contamination
Copper	08/02/2019	1.3	1.3	0.175	0	ppm	N	Erosion of natural deposits; Leaching from wood preservatives; Corrosion of household plumbing systems.
Lead	08/02/2019	0	15	2.2	0	ppb	N	Corrosion of household plumbing systems; Erosion of natural deposits

Disinfection By-Product	Collection Date	High Level Detected	Range of Individual Samples	MCLG	MCL	Units	Violation	Likely Source of Contamination
Haloacetic Acids (HAA5)	2021	8	3.3 - 20.4	No goal for the total	60	ppb	N	By-product of drinking water disinfection

\*The value in the Highest Level or Average Detected column is the highest average of all HAA5 sample results collected at a location over a year

Total Trihalomethanes (TTHM)	2021	32	20.5 - 53.8	No goal for the total	80	ppb	N	By-product of drinking water disinfection
------------------------------	------	----	-------------	-----------------------	----	-----	---	---

\*The value in the Highest Level or Average Detected column is the highest average of all TTHM sample results collected at a location over a year

Inorganic Contaminants	Collection Date	High Level Detected	Range of Individual Samples	MCLG	MCL	Units	Violation	Likely Source of Contamination
Barium	2021	0.15	0.13 - 0.15	2	2	ppm	N	Discharge of drilling wastes; Discharge from metal refineries; Erosion of natural deposits.
Flouride	2021	0.222	0.11 - 0.222	2	2	ppm	N	Erosion of natural deposits; Water additive which promotes strong teeth; Discharge from fertilizer and aluminum factories.
Nitrate [measured as Nitrogen]	2021	2	0.0909 - 2.14	10	10	ppm	N	Runoff from fertilizer use; Leaching from septic tanks; sewage; Erosion of natural deposits

Radioactive Contaminants	Collection Date	Highest Level Detected	Range of Individual Samples	MCLG	MCL	Units	Violation	Likely Source of Contamination
Beta/photon emitters	2021	5.6	0 - 5.6	0	50	pCi/L*	N	Decay of natural and man-made deposits.

\*EPA considers 50 pCi/L to be the level of concern for beta particles.

Combined Radium 226/228	2021	3.05	1.05 - 3.05	0	5	pCi/L	N	Erosion of natural deposits.
Gross alpha excluding radon and uranium	2021	12	7 - 12	0	15	pCi/L	N	Erosion of natural deposits.
Uranium	2021	3.5	2.7 - 3.5	0	30	ug/l	N	Erosion of natural deposits.

## Disinfectant Residual

Disinfectant Residual	Year	Average Level	Range of Levels Detected	MRDL	MRDLG	Unit of Measure	Violation (Y/N)	Source in Drinking Water
Free & Chloramine	2021	0.86	0.26 - 3.2	4	4	ppm	N	Water additive used to control microbes.

## Violations

### Public Notification Rule

The Public Notification Rule helps to ensure that consumers will always know if there is a problem with their drinking water. These notices immediately alert consumers if there is a serious problem with their drinking water (e.g., a boil water emergency).

Violation Type	Violation Begin	Violation End	Violation Explanation
PUBLIC NOTICE RULE LINKED TO VIOLATION	09/06/2020	03/10/2021	We failed to adequately notify you, our drinking water consumers, about a violation of the drinking water regulations.
PUBLIC NOTICE RULE LINKED TO VIOLATION	10/10/2021	11/15/2021	We failed to adequately notify you, our drinking water consumers, about a violation of the drinking water regulations.

## Abbreviations & Definitions Used in Tables

- **Action Level (AL):** The concentration of a contaminant which, if exceeded, triggers treatment or other requirements which a water system must follow.
- **Avg:** Regulatory compliance with some MCLs are based on running annual average of monthly samples.
- **Level 1 Assessment:** A Level 1 assessment is a study of the water system to identify potential problems and determine (if possible) why total coliform bacteria have been found in our water system.
- **Level 2 Assessment:** A Level 2 assessment is a very detailed study of the water system to identify potential problems and determine (if possible) why an E. coli MCL violation has occurred and/or why total coliform bacteria have been found in our water system on multiple occasions.
- **Maximum Contaminant Level or MCL:** The highest level of a contaminant that is allowed in drinking water. MCLs are set as close to the MCLGs as feasible using the best available treatment technology.
- **Maximum Contaminant Level Goal or MCLG:** The level of a contaminant in drinking water below which there is no known or expected risk to health. MCLGs allow for a margin of safety.
- **Maximum residual disinfectant level or MRDL:** The highest level of a disinfectant allowed in drinking water. There is convincing evidence that addition of a disinfectant is necessary for control of microbial contaminants.
- **Maximum residual disinfectant level goal or MRDLG:** The level of a drinking water disinfectant below which there is no known or expected risk to health. MRDLGs do not reflect the benefits of the use of disinfectants to control microbial contaminants.
- **MFL:** million fibers per liter (a measure of asbestos)
- **mrem:** millirems per year (a measure of radiation absorbed by the body)
- **na:** not applicable.
- **NTU:** nephelometric turbidity units (a measure of turbidity)
- **pCi/L:** picocuries per liter (a measure of radioactivity)
- **ppb:** micrograms per liter or parts per billion
- **ppm:** milligrams per liter or parts per million
- **ppq:** parts per quadrillion, or picograms per liter (pg/L)
- **ppt:** parts per trillion, or nanograms per liter (ng/L)
- **Treatment Technique or TT:** A required process intended to reduce the level of a contaminant in drinking water

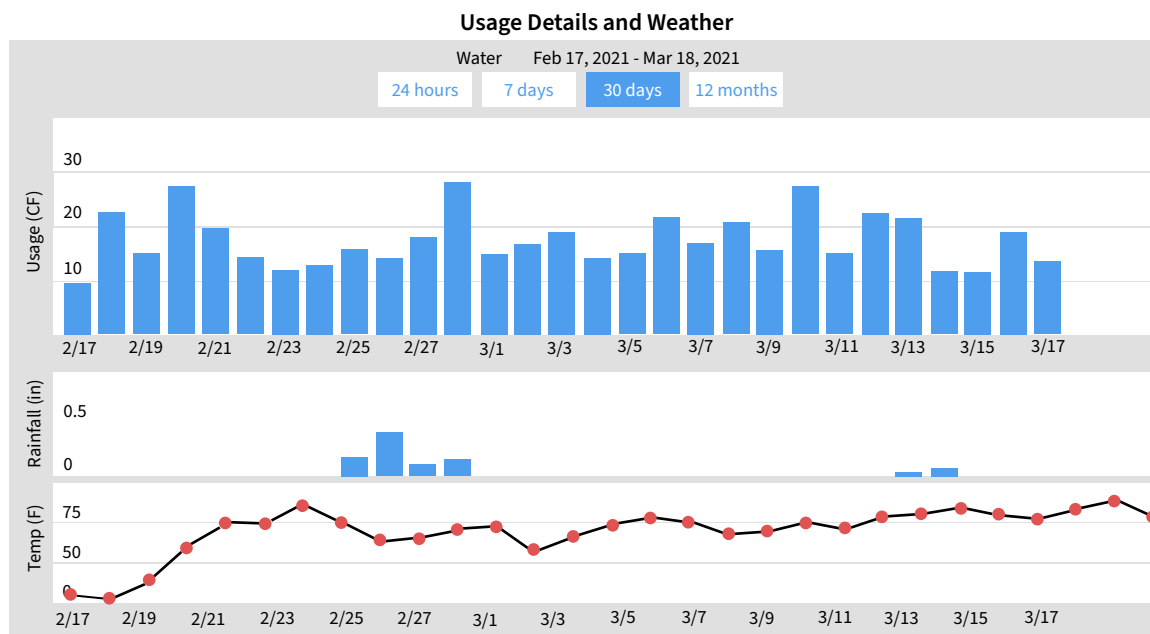
**For more information regarding this report, contact:**

Public Works Director, Ricky King  
Phone Number: (682) 229-2400



# Utility Customer Portal

Weatherford is pleased to announce a new Utility Customer Portal. The portal is a user-friendly interface designed to make monitoring your electric and water usage easier. Find out more at: [weatherfordtx.gov/3265/Utility-Customer-Portal](http://weatherfordtx.gov/3265/Utility-Customer-Portal).



In Usage Details, you can view your daily, weekly, monthly or yearly trends for water and electric usage.

Billing Cycle Usage	Billing Cycle Data	Billing Cycle Threshold	Alerts
	<p><b>Current billing cycle</b> Mar 17, 2021 to date 13 Cubic Feet</p> <p><b>Previous billing cycle</b> Feb 16, 2021 - Mar 16, 2021 474 Cubic Feet</p> <p><b>One year ago</b> Mar 17, 2020 - Apr 16, 2020 0 Cubic Feet</p>	<p><b>On Target</b> As of 11:59 pm</p> <p>Change or disable this threshold in <a href="#">Usage Alerts</a></p>	<p>No alerts found.</p>
<b>Water</b>	<b>Water</b>	<b>Water</b>	<b>Water</b>
<b>13 Cubic Feet</b> used this billing cycle	<b>13 Cubic Feet</b> used this billing cycle	<b>1%</b> consumed	<b>0</b> Alerts in the past 60 days

The customer portal dashboard can show you helpful information about your usage such as:

- Billing Usage Cycle
- Billing Cycle Data
- Billing Threshold
- Custom Alerts & Notifications



## 2021 ANNUAL WATER QUALITY REPORT

(Consumer Confidence Report)

CITY OF WEATHERFORD  
Public Water System #1840005

## Why Provide A Water Quality Report?

The sources of drinking water (both tap water and bottled water) include rivers, lakes, streams, ponds, reservoirs, springs, and wells. As water travels over the surface of the land or through the ground, it dissolves naturally-occurring minerals and, in some cases, radioactive material, and can pick up substances resulting from the presence of animals or from human activity.

Drinking water, including bottled water, may reasonably be expected to contain at least small amounts of some contaminants. The presence of contaminants does not necessarily indicate that water poses a health risk. More information about contaminants and potential health effects can be obtained by calling the EPA's Safe Drinking Water Hotline at (800)426-4791.

Contaminants that may be present in source water include:

- Microbial contaminants, such as viruses and bacteria, which may come from sewage treatment plants, septic systems, agricultural livestock operations, and wildlife.
- Inorganic contaminants, such as salts and metals, which can be naturally-occurring or result from urban storm water runoff, industrial or domestic wastewater discharges, oil and gas production, mining, or farming.
- Pesticides and herbicides, which may come from a variety of sources such as agriculture, urban storm water runoff, and residential uses.
- Organic chemical contaminants, including synthetic and volatile organic chemicals, which are by-products of industrial processes and petroleum production, and can also come from gas stations, urban storm water runoff, and septic systems.
- Radioactive contaminants, which can be naturally-occurring or be the result of oil and gas production and mining activities.

In order to ensure that tap water is safe to drink, EPA prescribes regulations which limit the amount of certain contaminants in water provided by public water systems. FDA regulations establish limits for contaminants in bottled water which must provide the same protection for public health.

Contaminants may be found in drinking water that may cause taste, color, or odor problems. These types of problems are not necessarily causes for health concerns. For more information on taste, odor, or color of drinking water, please contact the system's business office.

You may be more vulnerable than the general population to certain microbial contaminants, such as Cryptosporidium, in drinking water. Infants, some elderly, or immunocompromised persons such as those undergoing chemotherapy for cancer; persons who have undergone organ transplants; those who are undergoing treatment with steroids; and people with HIV/AIDS or other immune system disorders, can be particularly at risk from infections. You should seek advice about drinking water from your physician or health care providers. Additional guidelines on appropriate means to lessen the risk of infection by Cryptosporidium are available from the Safe Drinking Water Hotline (800-426-4791).

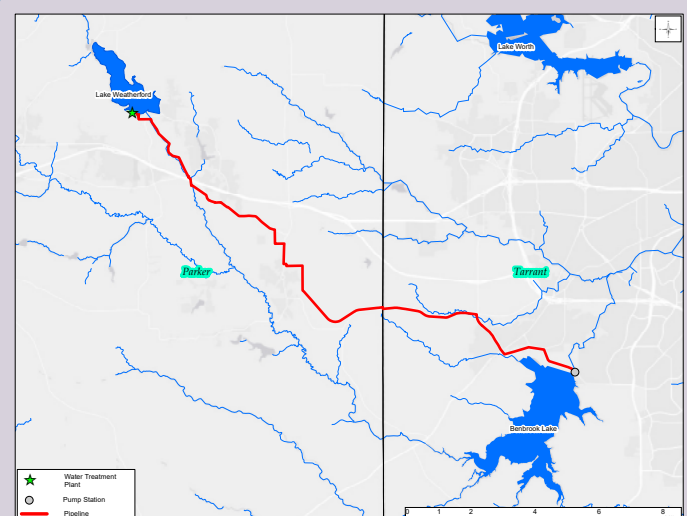
## WHERE DOES WEATHERFORD DRINKING WATER COME FROM?

City of Weatherford provides surface water from Lake Weatherford located in Parker County. We also have a secondary source of water - Benbrook Lake located in Tarrant County. Analysis for Benbrook Lake is not included in this report.

If present, elevated levels of lead can cause serious health problems, especially for pregnant women and young children. Lead in drinking water is primarily from materials and components associated with service lines and home plumbing. The City of Weatherford is responsible for providing high quality drinking water, but we cannot control the variety of materials used in plumbing components. When your water has been sitting for several hours, you can minimize the potential for lead exposure by flushing your tap for 30 seconds to 2 minutes before using water for drinking or cooking. If you are concerned about lead in your water, you may wish to have your water tested. Information on lead in drinking water, testing methods, and steps you can take to minimize exposure is available from the Safe Drinking Water Hotline or at <http://www.epa.gov/safewater/lead>.

### Water Loss

In the water loss audit submitted to the Texas Water Development Board for the time period of January 2021 to December 2021, our system lost an estimated 28.13 gallons per connection per day. Water loss is calculated using data from our finished water meter at the City of Weatherford Water Treatment Plant minus how much is sold to our water customers. If you have any questions about the water loss audit, please call the City of Weatherford Water Utilities Department at (817) 598-4275.





# 2021 Water Quality Report

\*For January 1 to December 31, 2021

## ABBREVIATIONS & DEFINITIONS USED IN TABLES

Inorganic Contaminants	Year Tested	Highest Level or Average Detected	Range of Levels Detected	MCLG	MCL	Unit of Measure	Violation (Y/N)	Likely Sources of Contamination
Arsenic	2021	1	1-1	0	10	ppb	N	Erosion of natural deposits; runoff from orchards; runoff from glass and electronics production wastes.
Barium	2021	0.064	0.064-0.064	2	2	ppm	N	Discharge of drilling wastes; discharge from metal refineries; erosion of natural deposits.
Chromium	2021	Not Detected	Not Detected	100	100	ppb	N	Discharge from steel and pulp mills; erosion of natural deposits.
Cyanide	2021	129	129-129	200	200	ppb	N	Discharge from plastic and fertilizer factories; discharge from steel/metal factories.
Fluoride	2021	0.56	0.56-0.56	4	4	ppm	N	Erosion of natural deposits; water additive which promotes strong teeth; discharge from fertilizer and aluminum factories.
Nitrate (measures as Nitrogen)	2021	0.0358	0.0358-0.0358	10	10	ppm	N	Runoff from fertilizer use; leaching from septic tanks, sewage; erosion of natural deposits.
Selenium	2021	Not Detected	Not Detected	50	50	ppb	N	Discharge from petroleum and metal refineries; erosion of natural deposits; discharge from mines.

### Total Organic Carbon

Total Organic Carbon (TOC) has no health effects. The disinfectant can combine with TOC to form disinfection by-products. Disinfection is necessary to ensure the water does not have unacceptable levels of pathogens. Disinfection by-products include Trihalomethanes (TTHM) and Haloacetic Acid (HAA5), which are reported elsewhere in this report.

	Year Tested	Highest Level or Average Detected	Range of Levels Detected	MCLG	MCL	Unit of Measure	Violation (Y/N)	Likely Source of Contamination
Total Organic Carbon	2021	4.60	4.13-5.39	NA	TT	ppm	N	Naturally present in the environment.

Disinfection Byproducts	Year Tested	Highest Level or Average Detected	Range of Levels Detected	MCLG	MCL	Unit of Measure	Violation (Y/N)	Likely Source of Contamination
Haloacetic Acids (HAA5)	2021	23*	12.8-37.2	No goal for the total	60	ppb	N	By-product of drinking water disinfection.
Total Trihalomethanes (TTHMs)	2021	54*	31.7-67.6	No goal for the total	80	ppb	N	By-product of drinking water disinfection.
Chlorite	2021	0.641	0.177-0.641	0.8	1	ppm	N	By-product of drinking water disinfection.

\*The result is the highest compliance average (locational running annual average) for HAA5 & TTHM

Microbial Contaminants	MCLG	Total Coliform MCL	Total No. of Samples Taken	Total No. of Positive E. Coli or Fecal Coliform Samples	Violation (Y/N)	Likely Source of Contamination
Total Coliform Bacteria	0	5%*	372	0	N	Naturally present in the environment.

\*No more than 5% of samples can be Total Coliform positive in a month.

Turbidity	Year Tested	Level Detected	Limit (Treatment Technique)	Unit of Measure	Violation	Likely Source of Contamination
Highest Single Measurement	2021	0.27 NTU	1 NTU	NTU	N	Soil Runoff.
Lowest Monthly % of Samples Meeting 0.3 NTU Limit	2021	100%	0.3 NTU	NTU	N	Soil Runoff.

Radioactive Contaminants	Year Tested	Highest Level Detected	Range of Levels Detected	MCLG	MCL	Unit of Measure	Violation (Y/N)	Likely Sources of Contamination
Beta/Photon Emitters	2017	4.2**	4.2-4.2	0	50*	pCi/L	N	Decay of natural and man-made deposits.
Uranium	2017	1.2	1.2-1.2	0	30	ug/L	N	Erosion of natural deposits.

\*The MCL for beta particles is 4 mrem/year. EPA considers 50 pCi/L to be the level of concern for beta particles.

\*\*Because the beta particle results were below 50 pCi/L, no test for individual beta particle constituents was required.

Lead and Copper	Year Tested	90 <sup>th</sup> Percentile	#of Sites Over Action Level (AL)	MCLG	AL	Unit of Measure	Violation (Y/N)	Likely Sources of Contamination
Copper	2019	0.13	0	1.3	1.3	ppm	N	Erosion of natural deposits; leaching from wood preservatives; corrosion of household plumbing systems.
Lead	2019	1.8	0	0	15	ppb	N	Corrosion of household plumbing systems; erosion of natural deposits.

Disinfectant Residual	Year Tested	Average Level	Range of Levels Detected	MRDL	MRDLG	Unit of Measure	Violation (Y/N)	Likely Source of Contamination
Chloramines	2021	3.31*	1.20-5.60	4	4	ppm	N	Water additive used to control microbes.

\*The value in the average level is the running annual average of all samples collected over a year.

### Secondary Constituents

Many constituents (such as calcium and sodium) which are often found in drinking water can cause taste, color, and odor problems. The taste and odor constituents are called secondary constituents and are regulated by the State of Texas, not by the EPA. These constituents are not causes for health concerns.

Secondary & Non-Regulated Constituents	Year Tested	Amount Detected	Range of Levels Detected	MCLG	MCL	SMCL	Unit of Measure	Violation (Y/N)	Likely Source
Calcium	2021	47.4	47.4-47.4	NA	NA	NA	ppm	N	Naturally present in the environment.
Chloride	2021	43.1	43.1-43.1	NA	NA	300	ppm	N	Abundant; naturally occurring element; used in water purification; by-product of oil field activity.
Manganese	2021	0.002	0.002-0.002	NA	NA	0.05	ppm	N	Naturally present in the environment; mining; industrial discharges.
pH	2021	8.31	8.12-8.62	NA	NA	>7.0	Units	N	Measurement of the corrosivity of water.
Sodium	2021	29.7	29.7-29.7	NA	NA	NA	ppm	N	Erosion of natural deposits; by-products of oil field activity.
Sulfate	2021	36.3	36.3-36.3	NA	NA	300	ppm	N	Naturally occurring common industrial product; by-product of oil field activity.
Zinc	2021	Not Detected	Not Detected	NA	NA	5	ppm	N	Naturally present in the environment, by-product of steel production.
Total Alkalinity as CaCO <sub>3</sub>	2021	152	152-152	NA	NA	NA	ppm	N	Naturally occurring soluble mineral salts.
Total Dissolved Solids	2021	271	271-271	NA	NA	1,000	ppm	N	Total dissolved mineral constituents in water.
Total Hardness as CaCO <sub>3</sub>	2021	171	171-171	NA	NA	NA	ppm	N	Naturally occurring calcium and magnesium.

### Unregulated Contaminants

Unregulated contaminants are those for which EPA has not established drinking water standards. The purpose of unregulated contaminant monitoring is to assist EPA in determining the occurrence of unregulated contaminants in drinking water and whether further regulation is warranted.

Unregulated Contaminants	Year Tested	Average Level	Range of Levels Detected	MCLG	MCL	Unit of Measure	Likely Sources of Contamination
Bromodichloromethane	2021	16.3	7.72-28	0	NA	ppb	By-product of drinking water disinfection.
Bromoform	2021	5.6	1.65-9.65	0	NA	ppb	
Chloroform	2021	11.9	2.72-29.4	70	NA	ppb	
Dibromochloromethane	2021	17.3	13.6-25.4	60	NA	ppb	

**90<sup>th</sup> Percentile:** 90% of samples are equal to or less than the number in the chart.

**Action Level (AL):** The concentration of a contaminant which, if exceeded, triggers treatment or other requirements which a water system must follow.

**Average (AVG):** Regulatory compliance with some MCLs are based on running annual average of monthly samples.

**Maximum Contaminant Level (MCL):** The highest level of a contaminant that is allowed in drinking water. MCLs are set as close to the MCLGs as feasible using the best available treatment technology.

**Maximum Contaminant Level Goal (MCLG):** The level of a contaminant in drinking water below which there is no known or expected risk to health. MCLGs allow for a margin of safety.

**Maximum Residual Disinfectant Level (MRDL):** The highest level of a disinfectant allowed in drinking water. There is convincing evidence that addition of a disinfection is necessary for control of microbial contaminants.

**Maximum Residual Disinfectant Level Goal (MRDLG):** The level of drinking water disinfectant below which there is no known or expected risk to health. MRDLGs do not reflect the benefits of the use of disinfectants to control microbial contaminants.

**NA:** Not applicable

**Nephelometric Turbidity Units (NTU):** Measurement of the clarity, or turbidity, of water.

**PPB:** Parts per billion or micrograms per liter-one ounce in 7,350,000 gallons of water.

**PPM:** Parts per million or milligrams per liter-one ounce in 7,350 gallons of water.

**pCi/L:** Picocuries per liter (a measure of radioactivity).

**Treatment Technique (TT):** A required process intended to reduce the level of a contaminant in drinking water.

**Turbidity:** Turbidity is the measurement of the cloudiness of the water caused by suspended particles. We monitor it because it is a good indicator of water quality and the effectiveness of our filtration system and disinfectants.

The Weatherford Municipal Utility Board, Administrators, and Water Treatment Professionals will be available for questions regarding water quality issues during the July 28, 2022 Board Meeting. The meeting is scheduled to begin at 12:00 p.m. at City Hall (303 Palo Pinto Street).

For more information regarding this report, please contact Angel Rudolph at (817) 598-4275.

Este reporte incluye informac[i]o[n] importante sobre el agua para tomar. Para asistencia en espanol, favor de llamar al telefono (817) 598-4275.



City of Weatherford  
P.O. Box 255  
Weatherford, TX 76086  
www.weatherfordtx.gov

Like us on Facebook, Instagram & Twitter!  
City of Weatherford

